



# Partnering with Progression

Explore the Value Proposition of Offshoring





# Content

- About Us
- Vision & Mission
- Who We Are
- Offshoring with Progression
- Core Competencies
- Our Services
- Implementation & Deployment-  
Virtualization Solutions
- Implementation & Deployment-  
Microsoft Technologies
- Implementation & Deployment-  
Database Management
- Implementation & Deployment-  
Enterprise Application Environment.
- Implementation & Deployment-  
Unix Administration
- Robust Delivery Model
- 24x7 RIMM Service
- Key Relationships
- Awards
- Success Stories
- Why work with us ?
- How can we help you

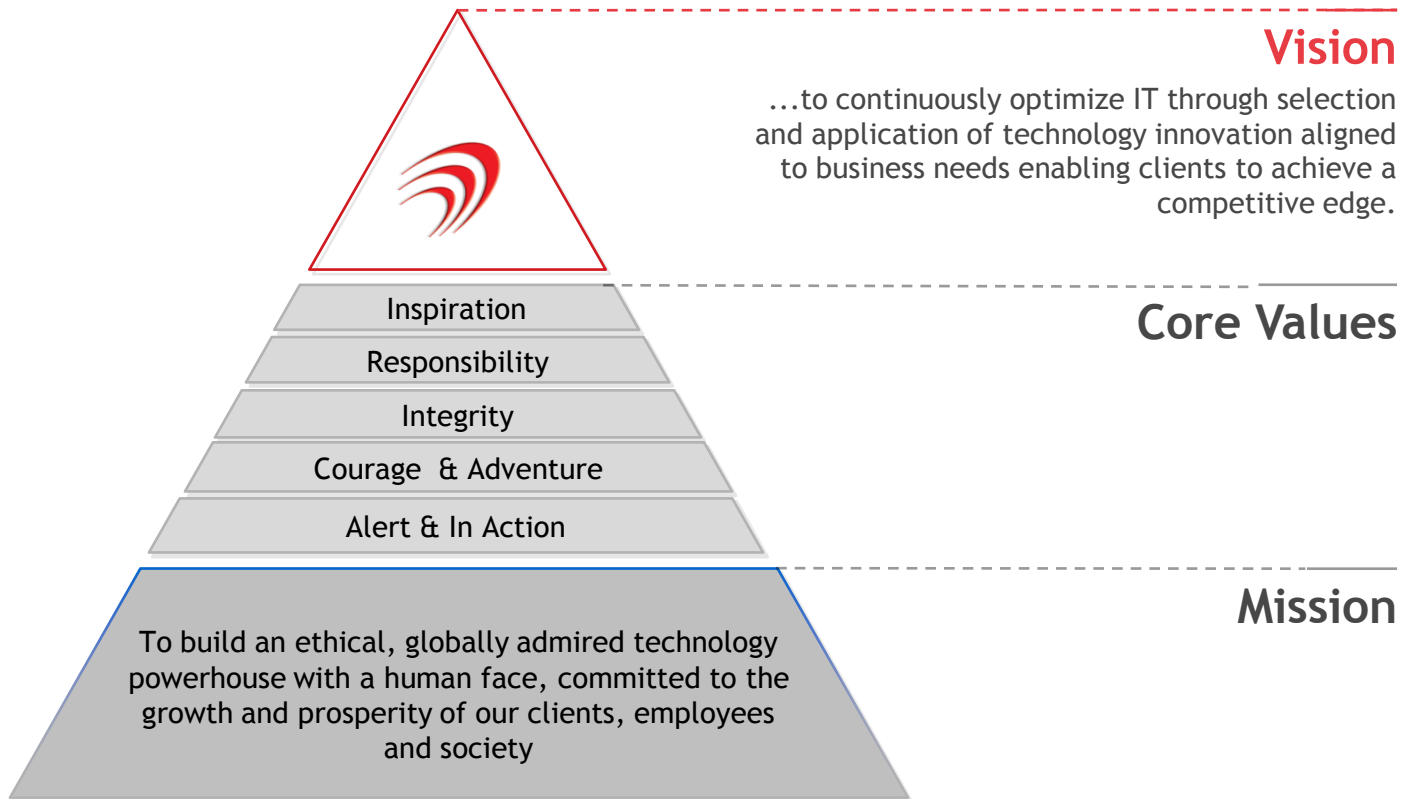


# About Us

- Progression Infonet is an IT infrastructure & Cloud services company founded in 1995
- Recognized as a trusted, expertise-driven managed IT and cloud services provider
- Team of 125 dedicated professionals
- Customer presence across India, Middle East, Europe and USA
- 85%+ client retention

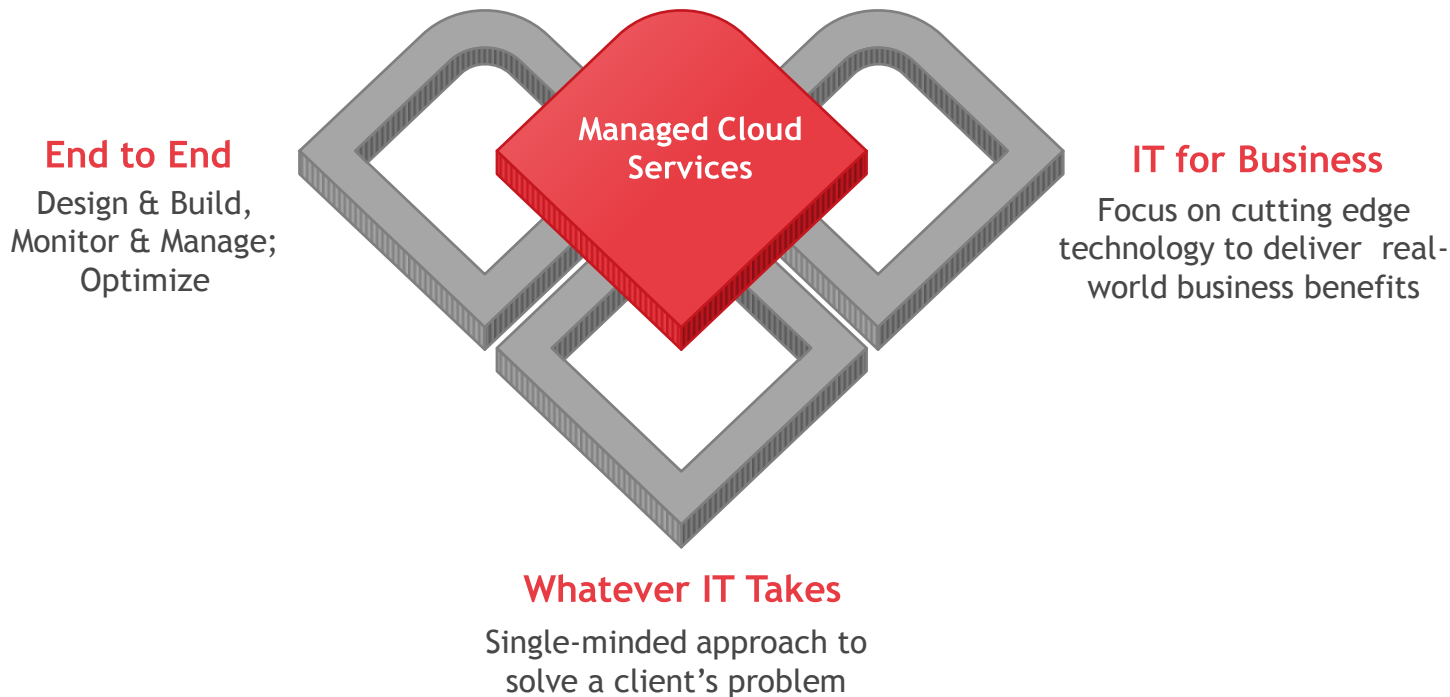


# Vision & Mission



# Who We Are

Progression helps businesses across the world get more effective in managing their IT Infrastructure and applications, while lowering the costs of running them



[Back to contents](#)

# Who We Are

## STANDARDS

ITIL 3  
ISO 27001

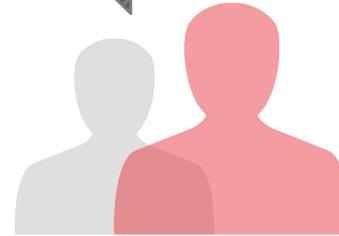
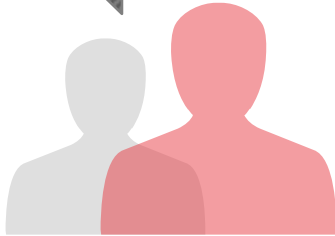
## CERTIFICATIONS

Certified in VMware,  
HP, Oracle,  
Microsoft, Cisco and  
Check Point  
technologies

## DATA CENTER

Leading edge remote  
monitoring NOC  
located in our own  
Tier 3+ data center

## PARTNERS



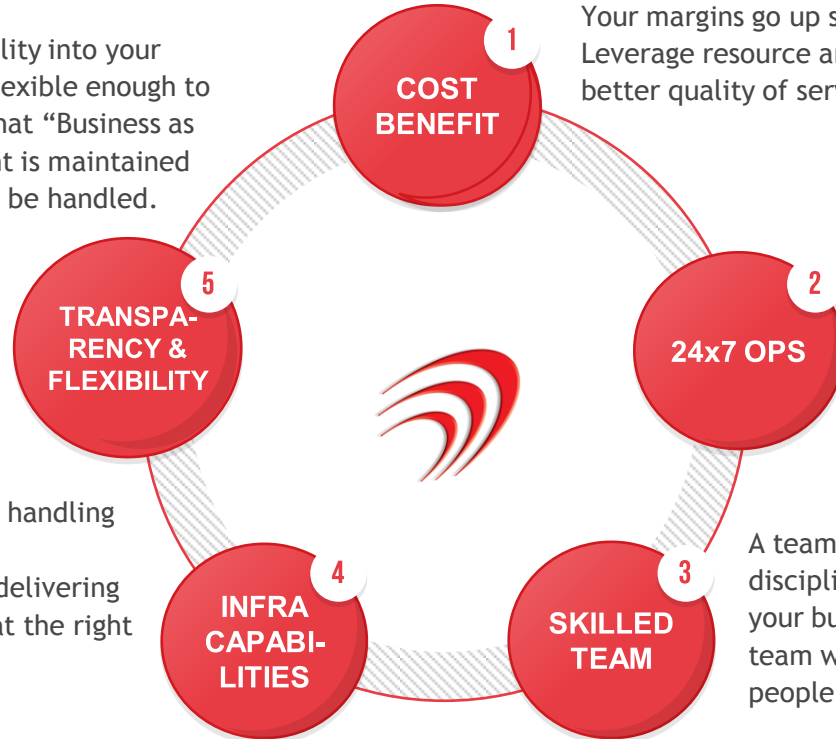
[Back to contents](#)

# Offshoring With Progression

Business benefits are tangible, and projects are outcome driven when IT infrastructure deployment and monitoring is offshored to Progression

You get total visibility into your projects. We are flexible enough to make changes so that “Business as Usual” environment is maintained and exigencies can be handled.

Vast experience of handling complex and large implementations, delivering the right solution at the right time



Your margins go up significantly  
Leverage resource arbitrage to deliver the same or better quality of service at lower costs

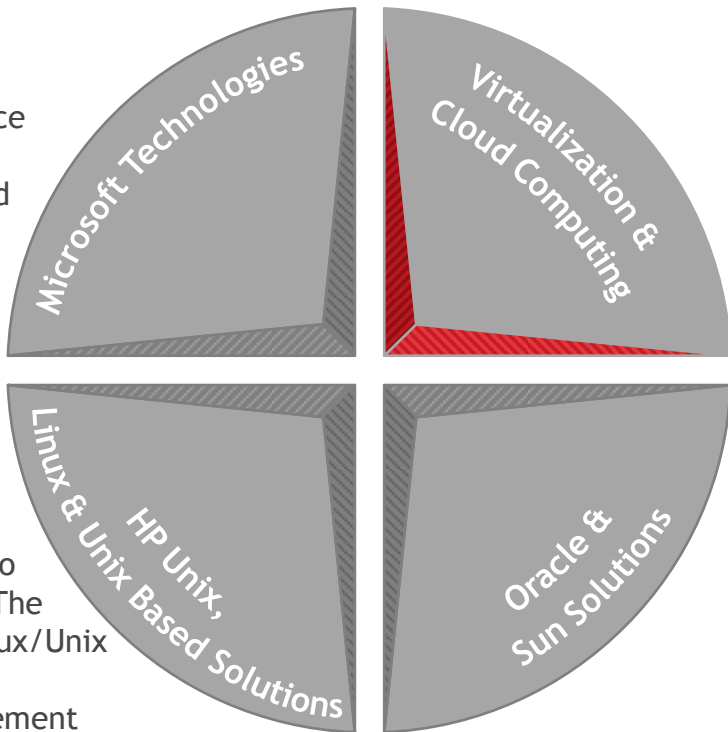
With our 24x7 offered service through the Offshore Delivery Center, you can leverage time zone differences to offer cost effective monitoring and management without having to spend on hiring exponentially

A team of certified resources with multi-disciplinary skill and domain knowledge to handle your business critical projects. Supplement your team with offshore team that have technical and people skills you need for business



# Core Competencies

Handle the entire product portfolio of Microsoft. The in-house team has experience and skills to implement Migrations, upgradations and enterprise grade solutions



Entire stack of virtualization and cloud offerings from VMware, from consulting to deployment & management through in-house support and solution experts

Dedicated HP Unix experts to address complex solutions. The team handles enterprise Linux/Unix consultation, migration, implementation and management

Full-function team of Oracle solution architects, Oracle Database, Spark & Solaris specialists and consultants deliver the best of migration, deployment and management solutions to clients





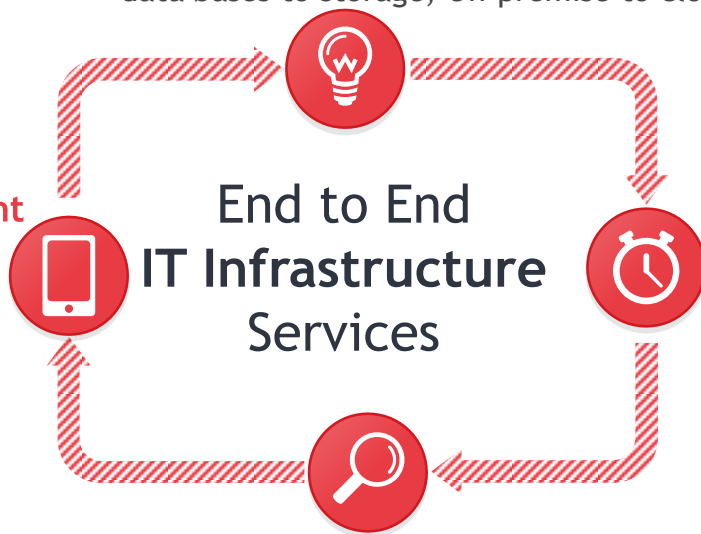
# Our Services

## Design & Architect

From networks to data centres, data bases to storage, On-premise to cloud.

## Tech Audit & Assessment

Review of infrastructure and identify areas to optimize, replace, or build new.



## Implementation & Deployment

End-to-end services, or specialist services for any layer of the infrastructure.

## 24x7 Monitoring & Management

State-of-the-art NOC with tools that track every aspect of the infra, and sends timely alerts to enable pre-emptive action.



[Back to contents](#)

# Implementation & Deployment - Virtualization Solutions

From end user computing to data center management and recovery, Progression delivers all solutions using VMware products

## Server Virtualization & Consolidation

- Infrastructure Assessment for consolidation
- Compute/Storage/Network/Security Virtualization Stack Deployment
- Virtualization of business critical applications
- Data Center Virtualization Consulting Services

## Data Center and Cloud Management

- Data Center Consolidation and transformation to Cloud (Private/Public/Hybrid)
- Cloud Operations Management
- Cloud Automation
- Data Centre Migration

## Desktop & End-User Computing

- Desktop Virtualization Solutions
- Application Virtualization
- Mobile Secure Desktop
- BYoD Integration

## Software Defined Data Center

- Cloud Automation with Workflow Integration
- Self Service Portal/SSO/Chargeback
- Operation Management & Monitoring

## Disaster Recovery

- Business Continuity
- Disaster Recovery as a Service



# Implementation & Deployment – Microsoft Technologies

Progression delivers infrastructure for Microsoft messaging, business applications, databases, and more

## Core Infrastructure

- Site specific design and build for running infrastructure applications like Active Directory, DNS, DHCP, WSUS, AV Server, etc

## Virtualization

- Private Cloud
- Desktop Virtualization

## Messaging and Collaboration

- Microsoft Exchange
- Unified Communications
- Microsoft SharePoint

## Database

- Microsoft SQL

## Security

- Forefront

## Business Applications Infra

- Microsoft Dynamics
- Microsoft SharePoint

## Cloud Management

- System Centre



# Implementation & Deployment - Database Management

Progression delivers migration, upgradation, implementation and support services for all types of major enterprise databases

## Technologies



SYBASE®

ORACLE®  
DATABASE



## Solutions

- Design and Architecture
- Installation and Configuration Management
- Database Analysis and Tuning
- Security Audit & Advisory
- Migration & Support
- Administration & Maintenance
- High availability configuration (replication, mirroring, copying)
- Backups
- Database Administration as a Service



Back to contents



# Implementation & Deployment - Enterprise Application Environments

Progression designs and deploys infrastructure for business critical applications

## Business Critical Applications

- ERP (SAP, Microsoft Dynamics, Oracle)
- Collaboration & Unified Communications
- CRM
- SCM
- Point of Sale

## Architecture

- IA-64
- x86
- Spark

## Solutions

- Compute and Storage Sizing
- Networking & Security
- Deployment
- Optimization
- Remote Infrastructure Monitoring
- Backup Solutions
- Archiving Solutions
- SSO, Data Theft Control & Security Solutions





# Implementation & Deployment - Unix Administration

Progression handles administration for all flavors of Unix

## Platforms

- HP-UX
- Oracle Solaris
- Linux

## Solutions

- High Availability and Business Continuity
- OEM's Native Cluster Technology (Oracle Cluster, HP ServiceGuard, RAC etc)
- Third Party Cluster Solution
- Integration (Veritas, NEC, Quest)

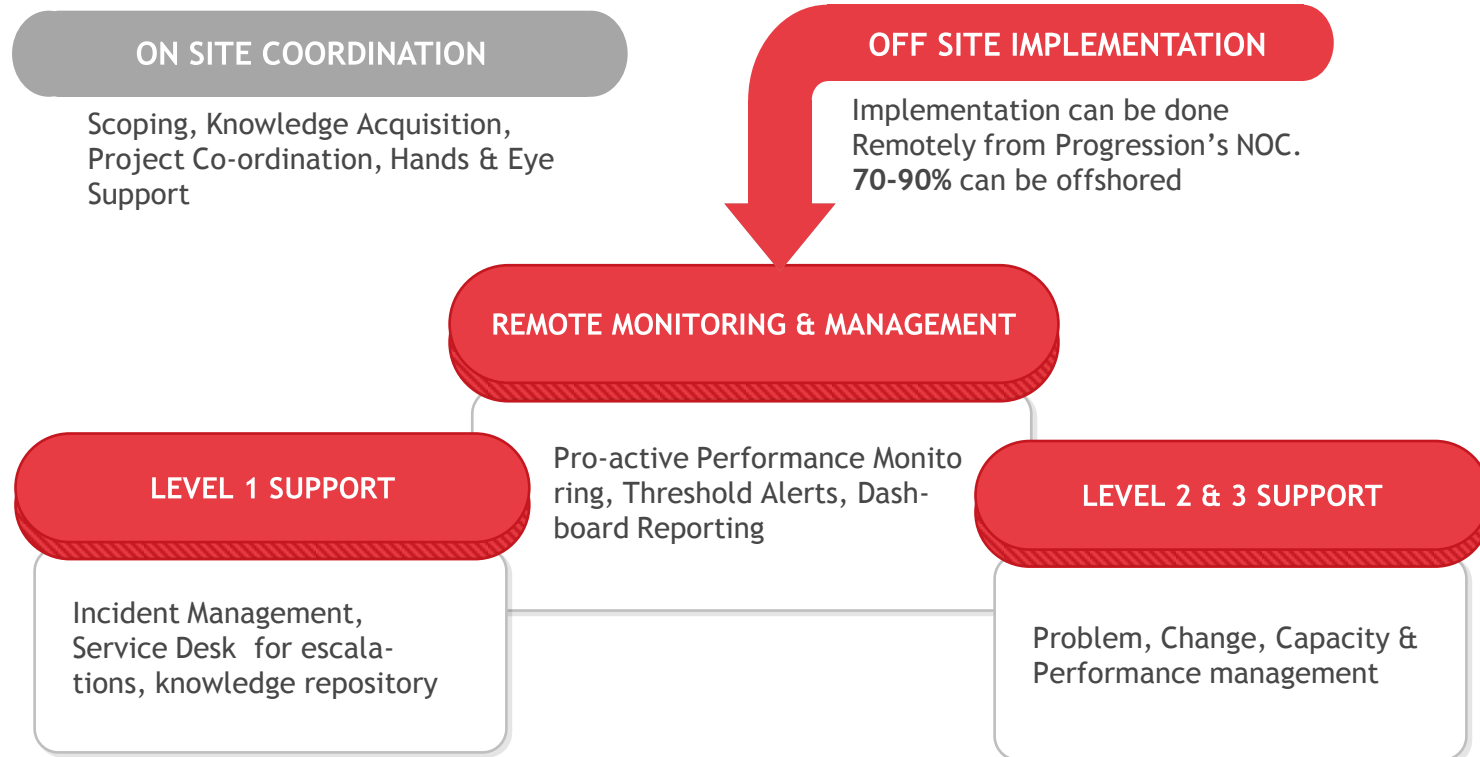
## Services

- Administration Services
- Change Management
- Fault Management
- Hardware Management
- Performance Management
- Operations Management
- Upgradation and Migration



# Robust Delivery Model

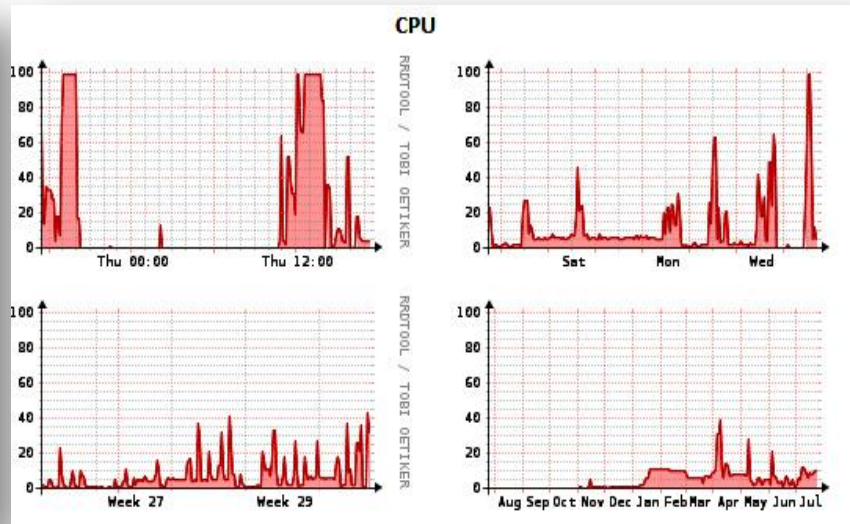
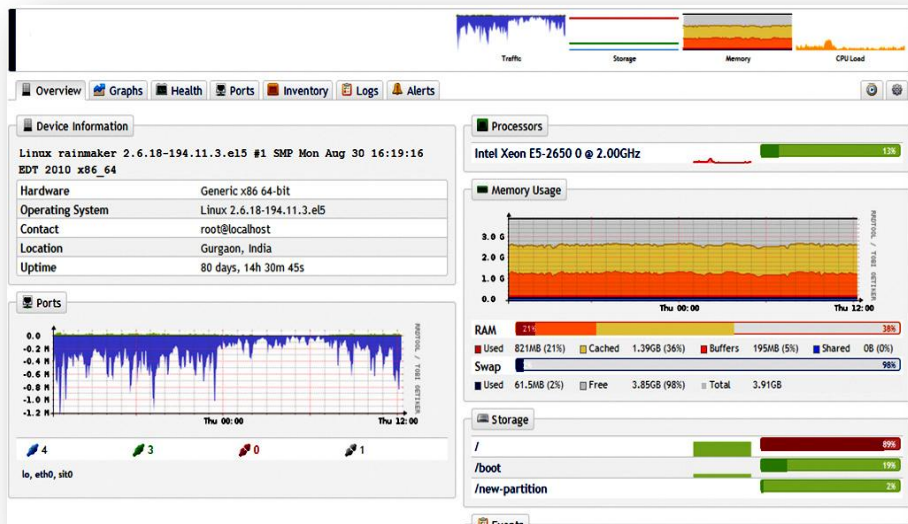
A combination of on site coordination and off site implementation delivers the best of both worlds to IT infrastructure service providers



# 24x7 RIMM Service

Progression can monitor and manage the IT infra for availability and performance so that your client's businesses can run efficiently

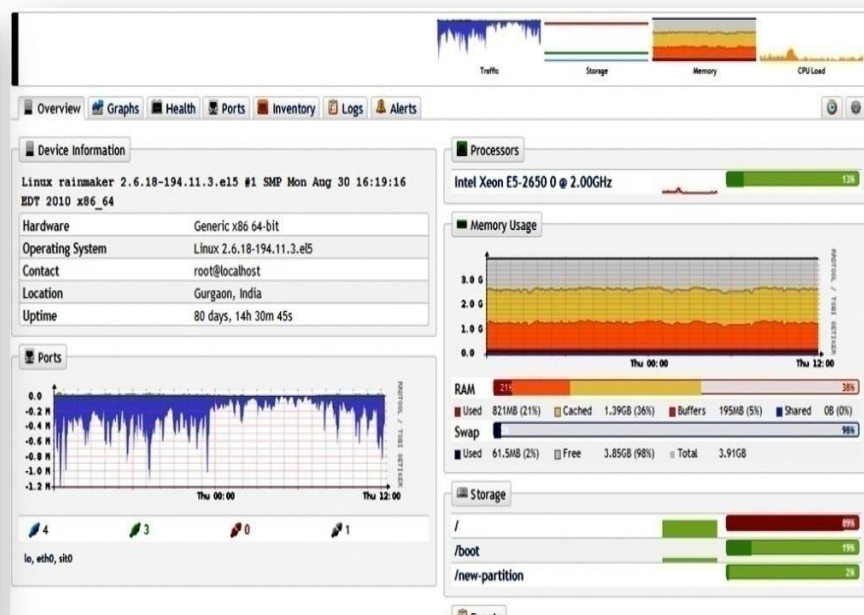
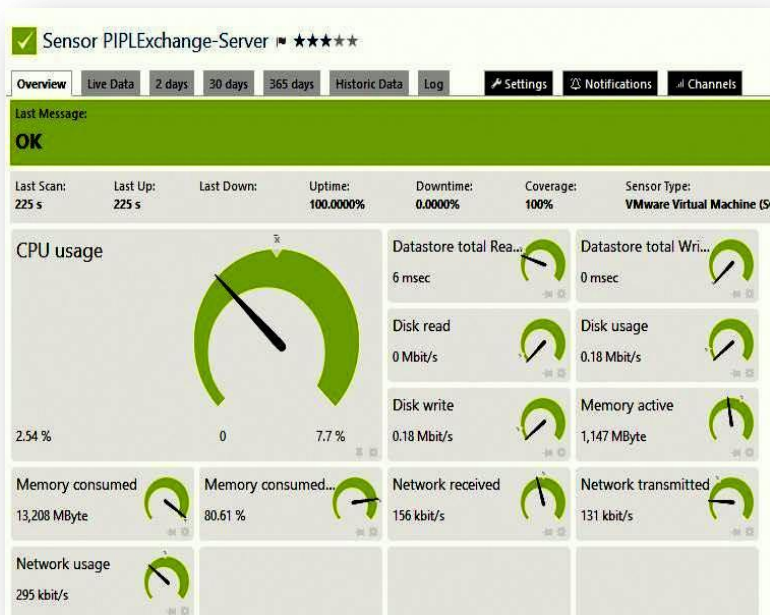
- Monitoring of all layers of IT resources including networks (WAN, LAN, security), compute, storage, hypervisors, operating systems, databases and applications.
- Dashboards to view the entire IT setup.





# 24x7 RIMM Service

- Comprehensive view various parameters and granular notifications and alerting to help resolve issues before they impact uptimes.
- 24x7 dedicated management by domain experts and technical specialists.





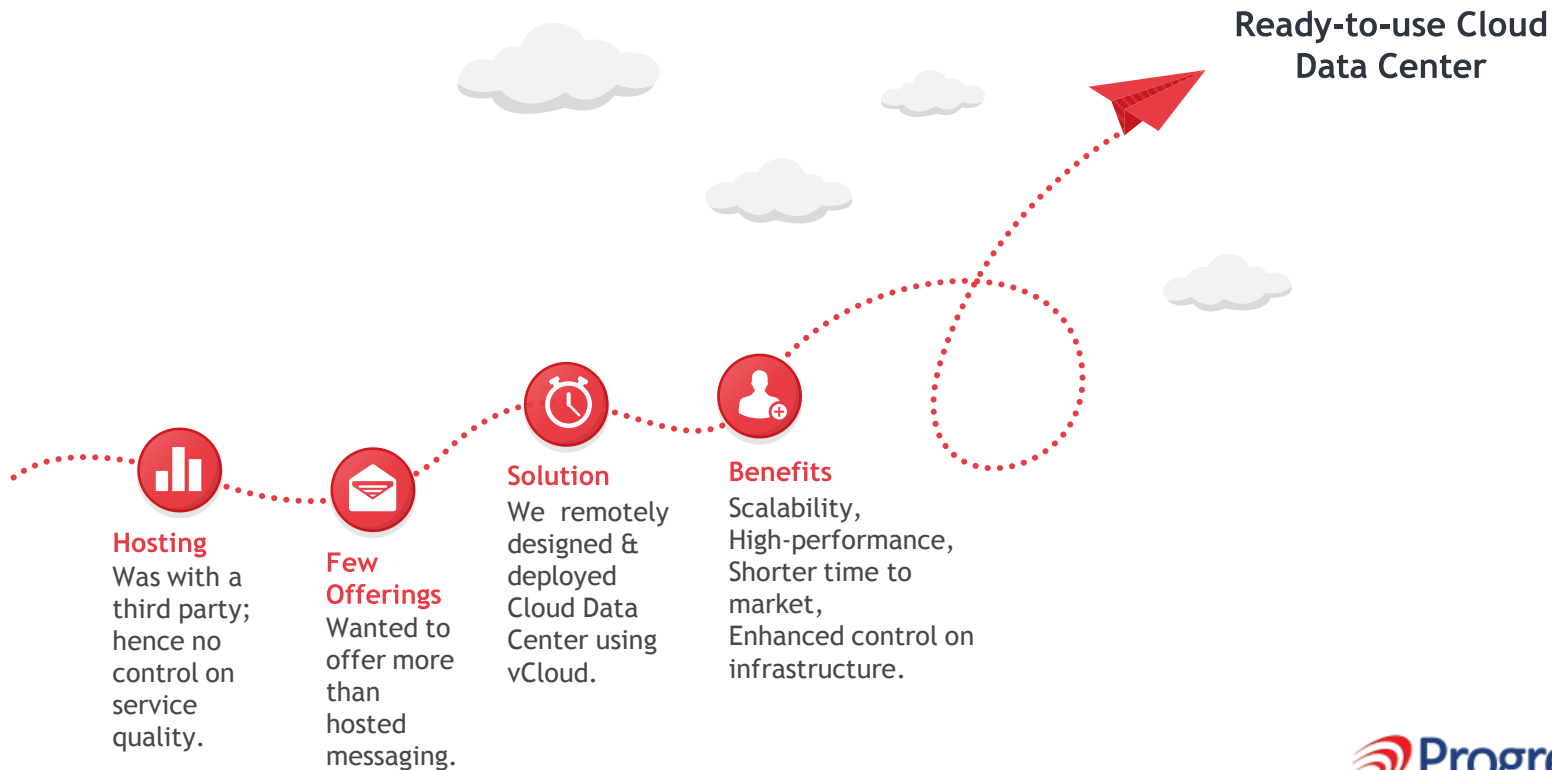
# Success Stories



[Back to contents](#)

# Success Story

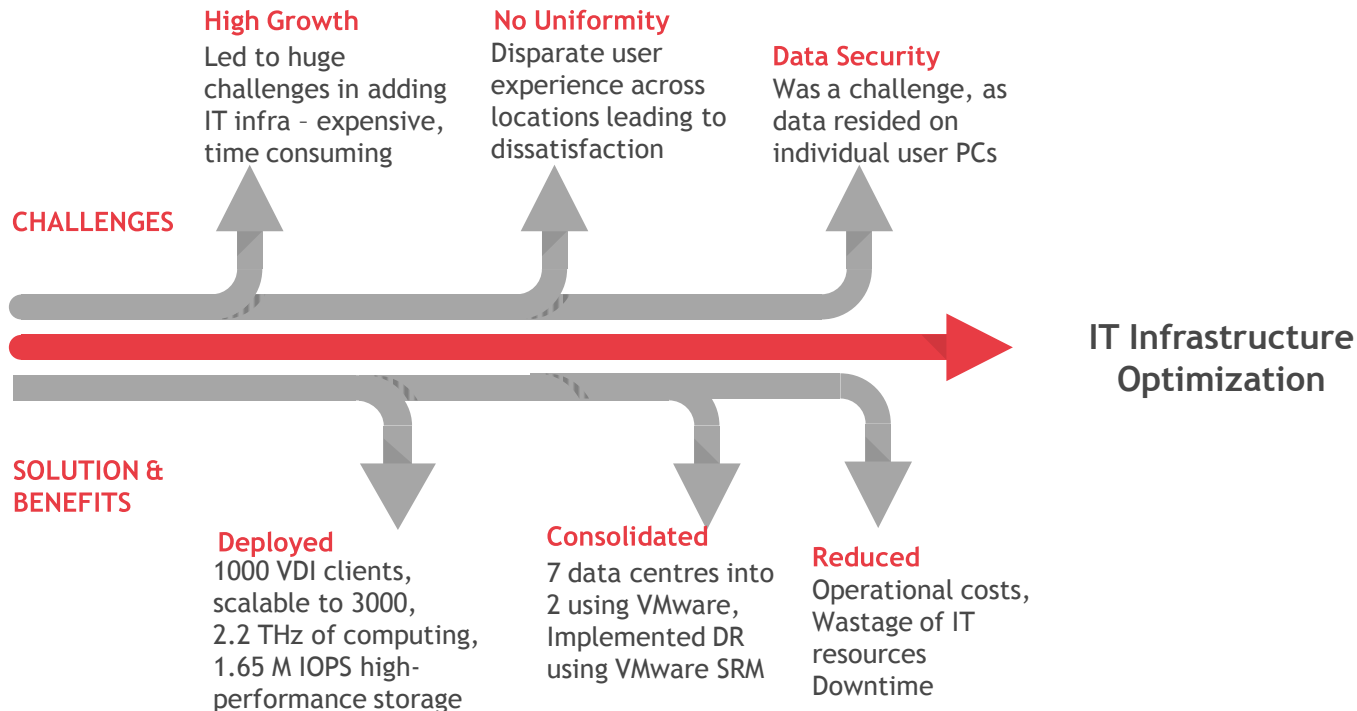
Hosted services provider based in Sweden



[Back to contents](#)

# Success Story

India's largest glass bottle and container manufacturer



[Back to contents](#)

# Success Story

India's largest two wheeler manufacturer

## Consolidated

- 50 physical servers to 8 virtualized hosts at central plant
- Two virtualized data centers set up in other plant locations

## Reduced

Costs and complexity of management

## Enabled

Flexibility to transition applications across data centers

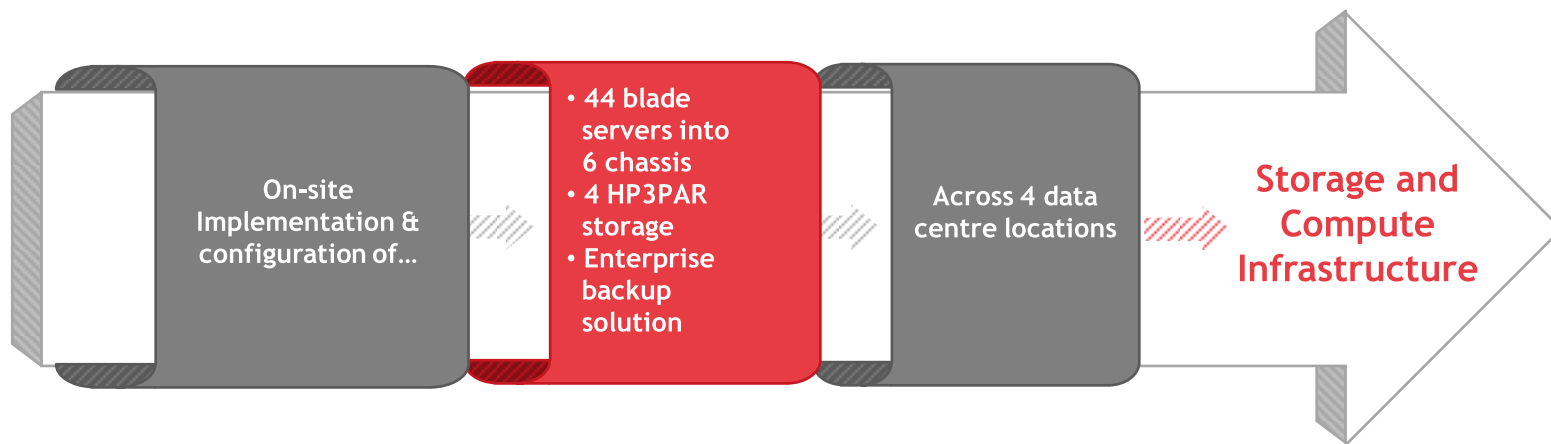
Data Center Consolidation & Optimization



[Back to contents](#)

# Success Story

One of Oman's Largest Enterprises



[Back to contents](#)

# Key Relationships



- Partner since 1997
- Progression has implemented the largest blade server solutions for HP in India
- We have implemented high-performance cluster storage



- Partner since 2006
- Deployed the largest VDI solution in India
- Implemented significant server consolidation projects

ORACLE

- Partner since 2001
- Implemented RAC infra for largest business house in India
- Implemented complex SUN compute grid



- Partner since 2000
- Handled migration from Linux to Microsoft Exchange, Active Directory and SharePoint deployments

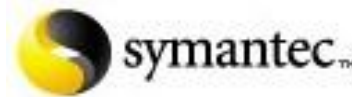


- Partner since 2009



[Back to contents](#)

# Key Relationships



[Back to contents](#)



# Awards



- Best Cloud Services Provider - North, 2014
- Best Data Center Project, 2014



- Outstanding contribution in Solution Provider category: 2013, 2014
- Outstanding contribution - Technical: 2009, 2010, 2011
- Outstanding contribution in Sales: 2009, 2011



Top ICT Solution Provider,  
2010-11, 2013



Best Performer in Storage category  
2011-12, 2013, 2014

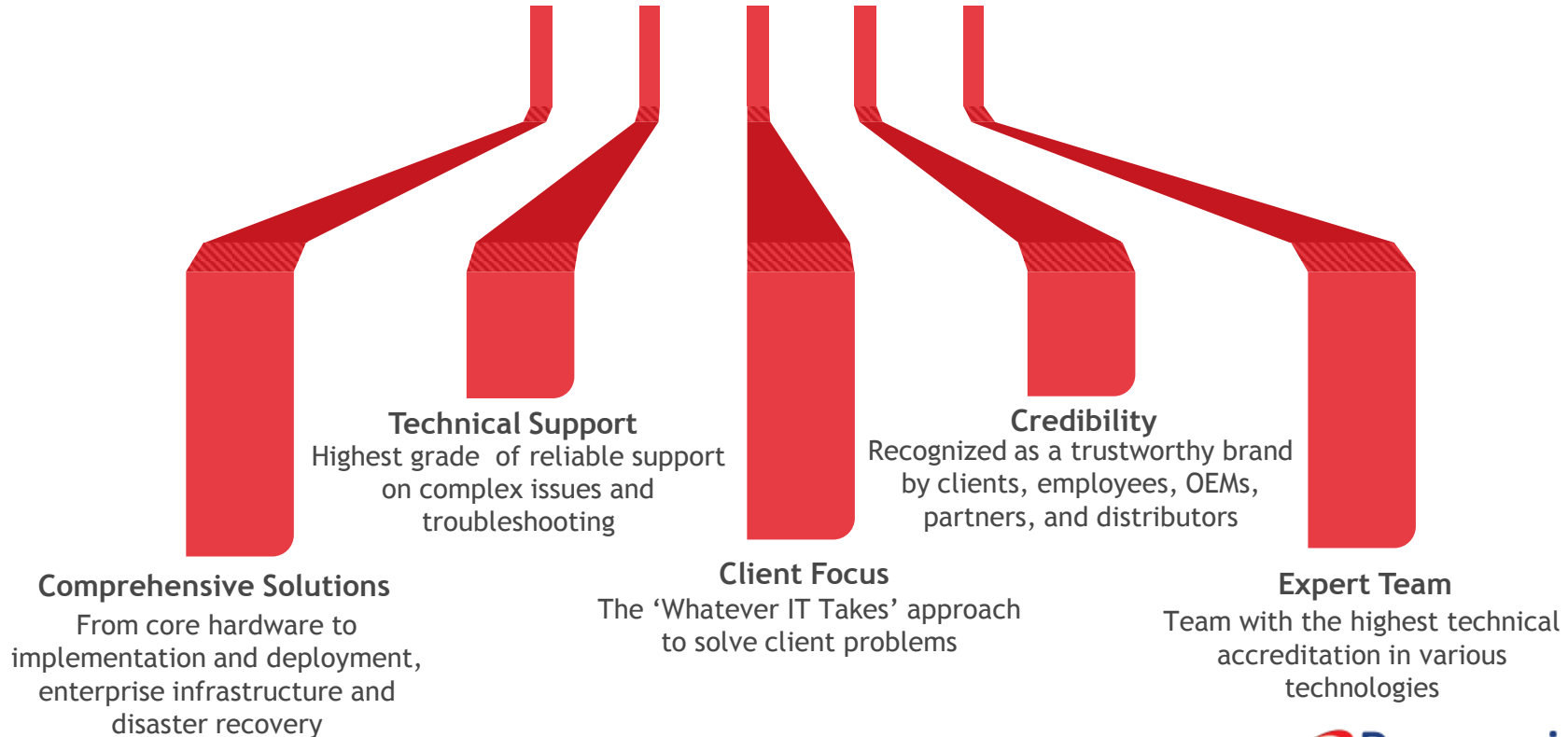


Best Solution Provider - Cloud,  
2011



[Back to contents](#)

# Why Work With Us?



[Back to contents](#)

# How Can We Help You?

Write to us at,  
[reach@progression.com](mailto:reach@progression.com)

Progression Infonet Private Limited  
55, IEM,  
Electronic City, Sector 18,  
Gurgaon - 122015  
Haryana,  
India

[www.progression.com](http://www.progression.com)  
Tel: +91-124-6670100  
Fax: +91-124-6670137

